



TAOS ARTS CLUB / TEEN ART STUDIO
UNM-Taos: Schedule 2012-2013



ARTISTIC ANATOMY, COMPARATIVE ANATOMY
COMPOSITIONAL DESIGN, ACTION, *GESTURE*, FORM, CHARACTER, SPIRIT, **EMOTION**
FACIAL FEATURES, *FACIAL EXPRESSIONS*, BUILDING STRUCTURE WITH PLANES, **SHADING**
SKELETAL STRUCTURE, *ARTICULATION*, MUSCLE STRUCTURE
ACTION, ORIGIN, INSERTION, IDEALIZED PROPORTION
INSPIRATION, ASPIRATION

ARTISTIC ANATOMY

INTRODUCTION TO DRAWING

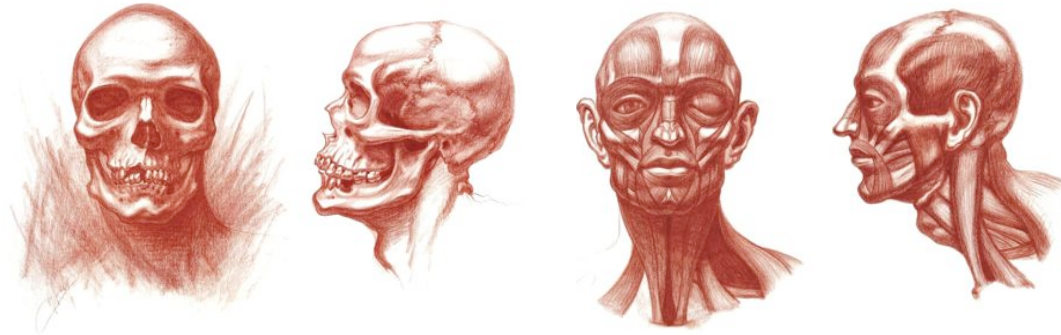
MICHAEL M. HENSLEY

Artistic Human, Animal, and Avian Anatomy

For more information please contact Michael M. Hensley:

Email: hensleyfineart@yahoo.com • www.artistanatomy.com • www.michaelmhensley.com

MICHAEL M. HENSLEY



Artistic Anatomy, The Art of Drawing the Human Form: Section I

WEEK 1: INTRO: Syllabus, Supplies, ACTION: GESTURE: Concept, Line, Movement, Form, Character (Skeletal Structure)

WEEK 2: ACTION: GESTURE: Concept, Line, Movement, Form, Character (Human Osteology, Skeletal Structure)

WEEK 3: FORM: SHADING: Cubes Planes & Egg Shaped Ovals, Three Dimensional Achievement (Skeletal Articulation)

WEEK 4: FORM: SHADING: IDEALIZED HUMAN PROPORTION: Aesthetic Theory of Artistic Perfection

WEEK 4: Complete & Submit work to Portfolio

WEEK 5: ARTISTIC ANATOMY: Anatomical Structure, the Human Trunk, Surface Anatomy (Male)

WEEK 6: ARTISTIC ANATOMY: Anatomical Structure, the Human Trunk, Surface Anatomy (Female)

WEEK 7: ARTISTIC ANATOMY: Anatomical Structure of the Upper Extremity, Surface Anatomy

WEEK 8: ARTISTIC ANATOMY: Anatomical Structure of the Lower Extremity, Surface Anatomy

WEEK 8: Complete & Submit work to Portfolio

WEEK 9: Portfolio Review

Artistic Anatomy, The Human Form, Evolution of the Human Head

WEEK 10: ARTISTIC ANATOMY: Anatomical Structure of the Human Hand, Surface Anatomy

WEEK 11: ARTISTIC ANATOMY: Anatomical Structure of the Human Foot, Surface Anatomy

WEEK 12: ACTION: GESTURE: Concept, Line, Movement, Form, Character (Human Head)

WEEK 13: FORM: SHADING: Ovals, Cubes & Planes, Three dimensional Achievement (Human Head)

WEEK 13: Complete & Submit work to Portfolio

WEEK 14: IDEALIZED PROPORTION: Aesthetic Theory of Artistic Perfection (Human Head)

WEEK 15: ARTISTIC ANATOMY: Anatomical Structure of the Human Skull, Surface Anatomy

WEEK 16: FEATURES: NOSE & MOUTH: Underlying Anatomical Structure, Surface Anatomy

WEEK 17: FEATURES: EYES & EARS: Underlying Anatomical Structure, Surface Anatomy

WEEK 17: Complete & Submit work to Portfolio

WEEK 18: Semester I Portfolio Review

Observation & Order, Comparative Human & Animal Anatomy: Section II

WEEK 1: THE PRIMATES: Homo Sapiens (Modern Man), Facial Angles, Differences in Appearance

WEEK 2: THE PRIMATES: Homo Sapiens (Modern Man), Biological Anthropology and Ethnicity, Evolution of the Human Skull

WEEK 3: THE PRIMATES: Homo Sapiens (Modern Man), Biological Anthropology and Ethnicity, Differences in Appearance

WEEK 4: NON HUMAN PRIMATES: The Greater Apes, (Gorilla, Orangutan, Chimpanzee & Bonobo)

WEEK 4: Complete & Submit work to Portfolio

WEEK 5: NON HUMAN PRIMATES: The Greater Apes, (Gorilla, Orangutan, Chimpanzee & Bonobo)

WEEK 6: FELIDAE: The Cats, Pantherinae & Felinae, (Sabertooth, African Lion, Siberian Tiger, Jaguar, Cougar, Bobcat)

WEEK 7: FELIDAE: The Cats, Pantherinae & Felinae, (Sabertooth, African Lion, Siberian Tiger, Jaguar, Cougar, Bobcat)

WEEK 8: URSIDAE: The Bear, (Cave Bear, Polar Bear, Grizzly Bear, American Black Bear, Giant Panda)

WEEK 9: Complete & Submit work to Portfolio

WEEK 9: Portfolio Review

Animal & Avian Anatomy, Fables, Myths, and Allegories, The Creative Self

WEEK 10: URSIDAE: The Bear, (Cave Bear, Polar Bear, Grizzly Bear, American Black Bear, Giant Panda)

WEEK 11: EQUUS: The Spirit of the Horse

WEEK 12: EQUUS: The Spirit of the Horse

WEEK 13: CANIDAE: CANIS LUPUS: Evolution of the Canine, The Wolves

WEEK 13: Complete & Submit work to Portfolio

WEEK 14: CANIDAE: CANIS LUPUS: Evolution of the Canine, The Wolves

WEEK 15: ORNITHOLOGY: AVIAN STRUCTURE: Birds of Prey, Corvids

WEEK 16: ORNITHOLOGY: AVIAN STRUCTURE: Birds of Prey, Corvids

WEEK 17: CREATIVE EXPRESSION: Fables, Myths and Allegories, The Illustrated Self (Creation to Infinity)

WEEK 18: FANTASY & CREATURE DESIGN: Complete & Submit work to Portfolio

WEEK 18: Final Portfolio Review

For more information please contact Michael M. Hensley:

Email: hensleyfineart@yahoo.com • www.artistanatomy.com • www.michaelmhensley.com