



TAOS ARTS CLUB / TEEN ART STUDIO

Taos High School: Art Media: Schedule 2011-2012



ARTISTIC ANATOMY, COMPARATIVE ANATOMY
COMPOSITIONAL DESIGN, ACTION, *GESTURE*, FORM, CHARACTER, SPIRIT, **EMOTION**
FACIAL FEATURES, *FACIAL EXPRESSIONS*, BUILDING STRUCTURE WITH PLANES, **SHADING**
SKELETAL STRUCTURE, *ARTICULATION*, MUSCLE STRUCTURE
ACTION, ORIGIN, INSERTION, IDEALIZED PROPORTION
INSPIRATION, ASPIRATION

ART MEDIA

INTRODUCTION TO DRAWING

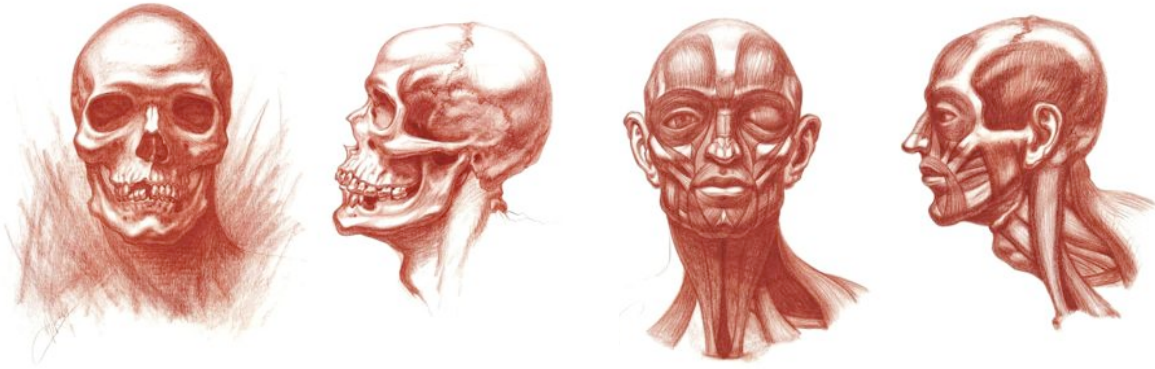
MICHAEL M. HENSLEY

Artistic Human & Comparative Animal Anatomy

For more information please contact Michael M. Hensley:

Email: hensleyfineart@yahoo.com • www.artistanatomy.com • www.michaelmhensley.com

MICHAEL M. HENSLEY



Artistic Anatomy, The Art of Drawing the Human Form

WEEK 1: INTRO: Syllabus, Supplies, ACTION: GESTURE: *Concept, Line, Movement, Form, Character (Skeletal Structure)*

WEEK 2: ACTION: GESTURE: *Concept, Line, Movement, Form, Character (Human Osteology, Skeletal Structure)*

WEEK 3: FORM: SHADING: *Cubes Planes & Egg Shaped Ovals, Three Dimensional Achievement (Skeletal Articulation)*

WEEK 4: FORM: SHADING: IDEALIZED HUMAN PROPORTION: *Aesthetic Theory of Artistic Perfection*

WEEK 4: Complete & Submit work to Portfolio

WEEK 5: ARTISTIC ANATOMY: *Anatomical Structure, the Human Trunk, Surface Anatomy (Male)*

WEEK 6: ARTISTIC ANATOMY: *Anatomical Structure, the Human Trunk, Surface Anatomy (Female)*

WEEK 7: ARTISTIC ANATOMY: *Anatomical Structure of the Upper Extremity, Surface Anatomy*

WEEK 8: ARTISTIC ANATOMY: *Anatomical Structure of the Lower Extremity, Surface Anatomy*

WEEK 8: Complete & Submit work to Portfolio

WEEK 9: Portfolio Review

Artistic Anatomy, The Art of Drawing the Human Form

WEEK 10: ARTISTIC ANATOMY: *Anatomical Structure of the Human Hand, Surface Anatomy*

WEEK 11: ARTISTIC ANATOMY: *Anatomical Structure of the Human Foot, Surface Anatomy*

WEEK 12: ACTION: GESTURE: *Concept, Line, Movement, Form, Character (Human Head)*

WEEK 13: FORM: SHADING: *Ovals, Cubes & Planes, Three dimensional Achievement (Human Head)*

WEEK 13: Complete & Submit work to Portfolio

WEEK 14: IDEALIZED PROPORTION: *Aesthetic Theory of Artistic Perfection (Human Head)*

WEEK 15: ARTISTIC ANATOMY: *Anatomical Structure of the Human Skull, Surface Anatomy*

WEEK 16: FEATURES: NOSE & MOUTH: *Underlying Anatomical Structure, Surface Anatomy*

WEEK 17: FEATURES: EYES & EARS: *Underlying Anatomical Structure, Surface Anatomy*

WEEK 17: Complete & Submit work to Portfolio

WEEK 18: Semester I Portfolio Review

Observation & Order, Comparative Anatomy, Animal Anatomy

WEEK 19: THE PRIMATES: *Homo Sapiens (Modern Man), Evolution of the Human Skull*

WEEK 20: THE PRIMATES: *Homo Sapiens (Modern Man), Biological Anthropology and Ethnicity, Differences in Appearance*

WEEK 21: THE PRIMATES: *Homo Sapiens (Modern Man), Biological Anthropology and Ethnicity, Differences in Appearance*

WEEK 22: THE PRIMATES: *The Greater Apes, (Gorilla, Orangutan, Chimpanzee & Bonobo)*

WEEK 22: Complete & Submit work to Portfolio

WEEK 23: THE PRIMATES: *The Greater Apes, (Gorilla, Orangutan, Chimpanzee & Bonobo)*

WEEK 24: THE PRIMATES: *The Greater Apes, (Gorilla, Orangutan, Chimpanzee & Bonobo)*

WEEK 25: FELIDAE: *The Cats, Pantherinae & Felinae, (Sabertooth, African Lion, Siberian Tiger, Jaguar, Cougar, Bobcat)*

WEEK 26: FELIDAE: *The Cats, Pantherinae & Felinae, (Sabertooth, African Lion, Siberian Tiger, Jaguar, Cougar, Bobcat)*

WEEK 26: Complete & Submit work to Portfolio

WEEK 27: Portfolio Review

Animal Anatomy, Fables, Myths, and Allegories

WEEK 28: URSIDAE: *The Bear, (Cave Bear, Polar Bear, Grizzly Bear, American Black Bear, Giant Panda)*

WEEK 29: URSIDAE: *The Bear, (Cave Bear, Polar Bear, Grizzly Bear, American Black Bear, Giant Panda)*

WEEK 30: EQUUS: *The Spirit of the Horse*

WEEK 31: EQUUS: *The Spirit of the Horse*

WEEK 31: Complete & Submit work to Portfolio

WEEK 32: EQUUS: *The Spirit of the Horse*

WEEK 33: CREATIVE EXPRESSION: *Fables, Myths and Allegories, The Illustrated Self (Creation to Infinity)*

WEEK 34: CREATIVE EXPRESSION: *Fables, Myths and Allegories, The Illustrated Self (Creation to Infinity)*

WEEK 35: CREATIVE EXPRESSION: *Fables, Myths and Allegories, The Illustrated Self (Creation to Infinity)*

WEEK 35: Complete & Submit work to Portfolio

WEEK 36: Final Portfolio Review

For more information please contact Michael M. Hensley:

Email: hensleyfineart@yahoo.com • www.artistanatomy.com • www.michaelmhensley.com